

Control centre ST-1240

For single-line, dual-line and progressive automatic lubrication systems



Suitable for max. 2 or 4 lubrication channels



Supports automatic pump change (Dualset)



0 to 50 °C
(32 to 122 °F)



Online control software



Remote control via fieldbus

INCL. THE NEW
STAINLESS STEEL
ST-1240-GRAPH-RST
CONTROL CENTRE



Applications

- Mining
- Cement
- Construction
- Machine tools
- Pulp and paper
- Food and beverage
- Mineral processing
- Renewable energy

Product information



Description

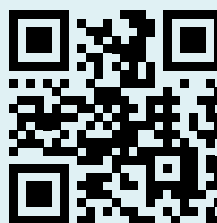
ST-1240 is a control unit for automatic lubrication systems. While ST-1240-GRAPH is a two-channel lubrication control centre, ST-1240-GRAPH-4 supports up to four channels or zones. With ST-1240-GRAPH-RST a stainless steel version completes the range. All variants support any combination of single-line and progressive automatic lubrication systems (ALS). The lubrication channels can be zones, separated by shut-off valves or independent lubrication systems with separate pumping centres (max. 2) and varying lubricants. ST-1240 control centres come with a user-friendly colour touch screen panel that guides the user step-by-step through the application. The controllers support remote control via mobile devices or fieldbus, allowing easier system inspection and trouble shooting.

Features and benefits

- Reliable lubrication system control
- Suitable for single-line, dual-line and progressive automatic lubrication systems
- Control of up to 4 independently operating lubrication channels or lubrication systems
- Control of grease spraying systems incl. air pressure monitoring
- Control of low lubricant filling levels
- Control of system pressure deviations
- On-the fly lubricant barrel exchange (Dualset valve support)
- Optional remote control via fieldbus

Technical data

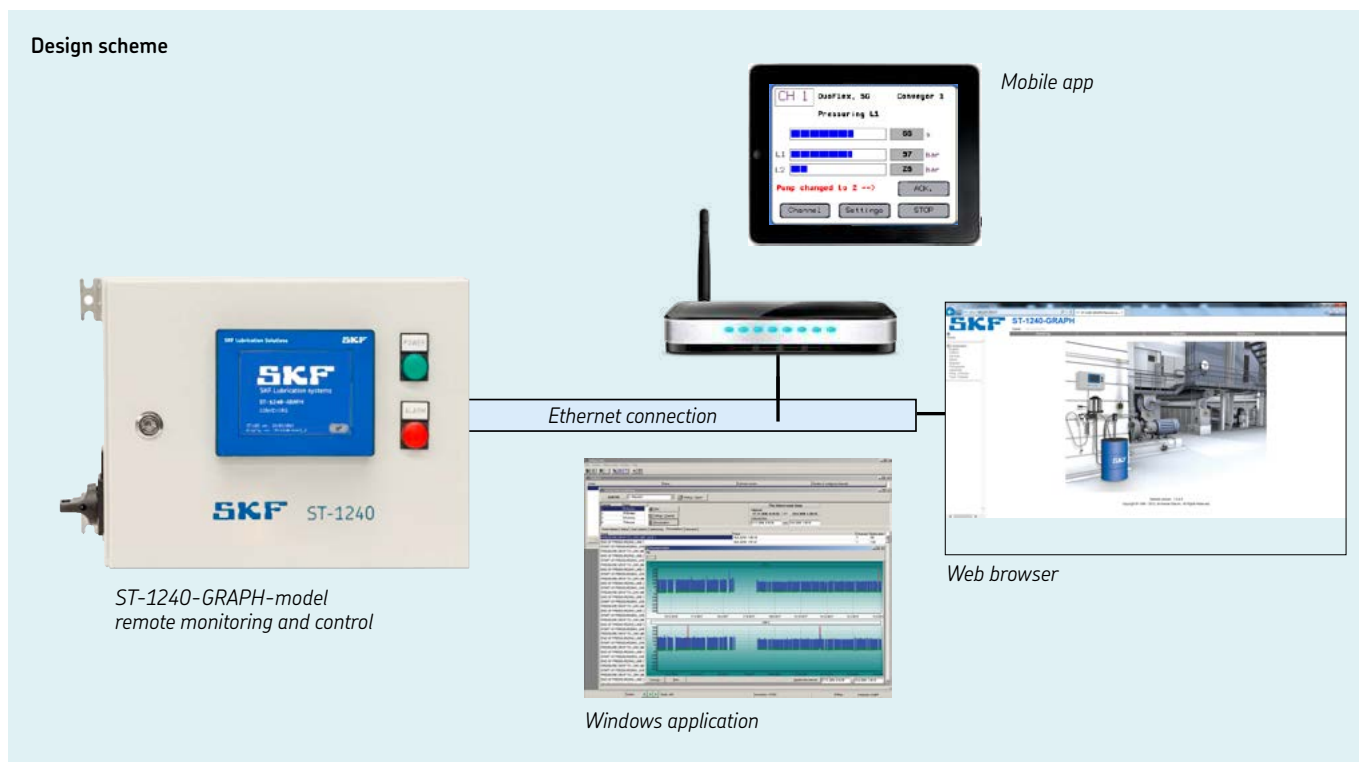
Function	control center
Operating temperature	0 to 50 °C; 32 to 122 °F
Number of lubrication channels	max. 2 to 4 (depending on variant)
Supply voltage	93 to 132 V AC, 186 to 264 V AC
Supply voltage frequency	47 to 63 Hz
Supply current	5,4 A/115 V AC, 2,2 A/230 V AC
Control voltage	24 V DC, ± 10%
Overload protection	automatic fuse, 6 A
Cable connection	screw connections for 2,5 mm ² wires
Protection class	IP 65
Interface	5,7" touchscreen display, 320x240 pixel, 64k colors
API	RS-422 port for SKF online software
Terminal connections	Screw connections for 2,5 mm ² wires
Alarm outputs	Relay contact 1pcs (potential-free)
Interlock inputs	2pcs (potential free contact)
Dimensions (without cable glands)	380 × 300 × 210 mm
Weight	14.9 × 11.8 × 8.3 in
	10 kg
	22 lbs
Mounting position	upright



For further information as product and application information, references and product videos, please visit:

SKF.com/st-1240

SKF Online software

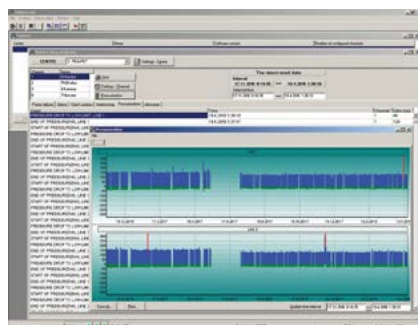


Description

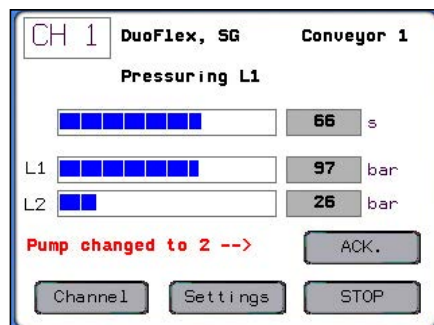
Models ST-1240-GGRAPH supports the Microsoft Windows™ software SKF Online, which is designed for controlling, monitoring and analysing lubrication systems. Up to 20 control centres can be connected to the system. The application runs on Microsoft Windows™ operating system devices that can be connected either directly or via Ethernet

and provides two main functions, online system control and analysis of lubrication history data. The Online function enables you to monitor the system operation online, starting extra lubrication cycles, resetting alarms and setting the parameters for the centre and the lubrication channels. The history-data-function enables the user to read

and analyse lubrication history, lubrication trends, alarms, user actions etc. The system settings can be saved into a file and restored as parameter values for the system, if necessary.



SKF Online software



SKF Online software:
Channel status



SKF Online software:
Channel settings

Order information

ST-1240

Order number	Designation	Material
12380210	ST-1240-GRAPH	Steel, painted RAL 7035
12380200	ST-1240-GRAPH-4	Steel, painted RAL 7035
12380218	ST-1240-GRAPH-RST	Stainless steel



Product features

	ST-1240-GRAPH	ST-1240-GRAPH-4	ST-1240-GRAPH-RST
Lubrication channels, max.			
Single-line ALS	2	4	2
Dual-line ALS	2	0	2
Progressive ALS	2	4	2
Lubricant+Air ALS (Spray systems)	2	2	2
Control options			
Low level alarm	•	•	•
System pressure	•	•	•
Metering device pulses	•	•	•
Sprayed air	•	•	•
Doser monitor (Dual-line ALS)	•	—	•
Dualset valves (barrel pumps)	•	—	•
Remote communication			
SKF Online software	•	—	•
Mobile app and web browser	•	•	•
Fieldbus (optional)	•	•	•
SMS gateway, E-SMS-C (optional)	•	—	•

SKF Lubrication Systems

e-mail: skf-lube@skf.com

skf.com/lubrication | skf.com/st-1240

® SKF and LINCOLN are registered trademarks of AB SKF (publ).

™ WINDOWS is a registered trade of the Microsoft Corporation.

© SKF Group 2022. All rights reserved. Please note that this publication may not be copied or distributed, in whole or in part, unless prior written permission is granted.

Every care has been taken to ensure the accuracy of the information contained in this publication, but no liability can be accepted for any loss or damage whether direct, indirect or consequential arising out of the use of the information contained herein.

PUB LS/P2 12404 EN · October 2022

Certain image(s) used under license from Shutterstock.com.