

SKF Bearing Grease

EAL biodegradable grease

LGGB 2

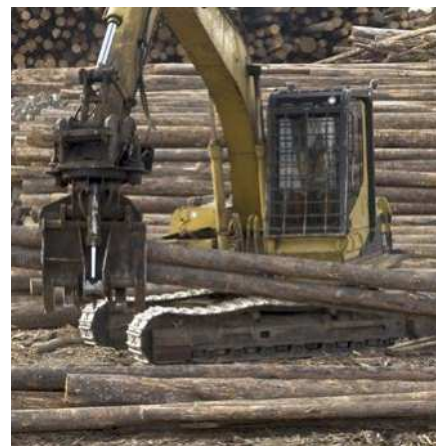
SKF LGGB 2 is an Environmentally Acceptable Lubricant (EAL). Its special formulation makes it most suitable for applications where environmental contamination is a concern.

More than a biodegradable grease, an EAL is a lubricant that meets minimum standards for biodegradability, toxicity and bio-accumulation ¹⁾. Therefore, their likelihood of having adverse consequences for the aquatic environment, compared to conventional lubricants is minimized.

- Good performance in applications with steel-on-steel spherical plain bearings, ball bearings and roller bearings
- Good low temperature start-up performance
- Good corrosion inhibiting properties
- Suitable for medium to high loads

Typical applications

- Agricultural and forestry equipment
- Construction and earthmoving equipment
- Mining and conveying equipment
- Water treatment and irrigation
- Locks, dams, bridges
- Linkages, rod ends



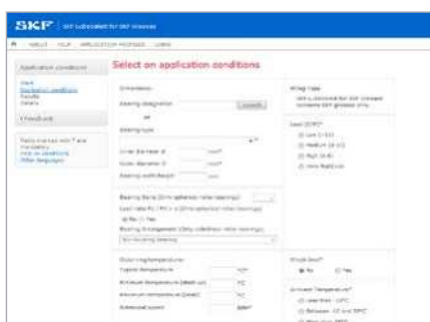
Available pack sizes

Packsize	Designation
420 ml cartridge	LGGB 2/0.4
5 kg can	LGGB 2/5
18 kg pail	LGGB 2/18
Gas driven lubricator	
LAGD series 125 ml	LAGD 125/GB2



¹⁾ According to the U.S. Environment Protection Agency's Vessel General Permit (EPA VGP)

Technical data			
Designation	LGGB 2/(pack size)		
ISO 12924 code	ISO 12924 ISO-L-XD(L)CEB 2	Corrosion protection	
NLGI consistency class	2	Emcor: – standard ISO 11007	0–0
Thickener	Lithium/calcium	– water washout test	0–0
Colour	Light brown	– salt water test (0.5% NaCl)	0–0
Base oil type	Ester	Water resistance	
Operating temperature range	–40 to +90 °C (–40 to +195 °F)	DIN 51 807/1, 3 hrs at 90 °C	1
Dropping point DIN ISO 2176	>165 °C (>330 °F)	Copper corrosion	
Base oil viscosity		DIN 51811 / ASTM D4048, 24 hrs at 100 °C (210 °F)	2 max.
40 °C, mm ² /s	110	Oil separation	
100 °C, mm ² /s	18	DIN 51 817, 7 days at 40 °C, static, %	1–3
Penetration DIN ISO 2137		Lubrication ability	
60 strokes, 10 ^{–1} mm	265–295	R2F, running test B at 120 °C	Pass at 90 °C (195 °F)
100 000 strokes, 10 ^{–1} mm	+50 max.	Rolling bearing grease life	
Mechanical stability		R0F test L ₅₀ life at 10 000 r/min., hrs	1000 at 90 °C (195 °F)
Roll stability, 50 hrs at 80 °C, 10 ^{–1} mm	+70 max.	EP performance	
These characteristics represent typical values.		Wear scar DIN 51350/5, 1 400 N, mm	1.8 max.
		4–ball test, welding load DIN 51350/4, N	2 600 min.
		Shelf life	2 years



Advanced tool for grease selection and relubrication calculation

LubeSelect for SKF greases

Selecting a suitable grease for a particular bearing is a crucial step if the bearing is to meet design expectations in its application. SKF knowledge about bearing lubrication has been encapsulated into a computer program that can be consulted at skf.com/lubeselect

LubeSelect for SKF greases provides you a user friendly tool to select the right grease and suggest frequency and quantity, while taking into account the particular conditions of your application. General guidelines for typical greases for different applications are also available.



Scan or click the QR code, or go to skf.com/lubeselect

skf.com | skf.com/lubrication | skf.com/mapro

© SKF is a registered trademark of AB SKF (publ).

© SKF Group 2025. All rights reserved. Please note that this publication may not be copied or distributed, in whole or in part, unless prior written permission is granted.

Every care has been taken to ensure the accuracy of the information contained in this publication, but no liability can be accepted for any loss or damage whether direct, indirect or consequential arising out of the use of the information contained herein.

PUB MP/P8 12049/5 EN · January 2025

Certain image(s) used under license from Shutterstock.com.