

# Biodegradable grease for total loss applications

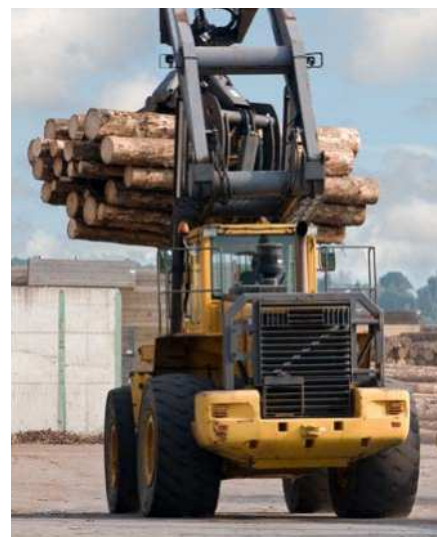
## LGTE 2

LGTE 2 is grease for total loss applications based on biodegradable esters and anhydrous calcium thickener. The grease is environmentally acceptable and certified with Ecolabel, making it the ideal grease for marine applications such as wire ropes.

- Biodegradable and categorized as “Total loss lubricant (TLL)” as defined by Ecolabel
- Environmentally acceptable lubricant according to “2013 Vessel General Permit”
- Excellent pumpability at low to medium temperatures
- Excellent adhesion to surfaces
- Excellent water resistance
- High load capacity

### Typical applications

- Wire ropes
- Marine
- Construction equipment
- Forestry and agricultural equipment
- Heavy duty off-road application
- Plain bearings and bushings



### Available pack sizes

Packsize	Designation
18 kg pail	LGTE 2/18



Technical data			
Designation		LGTE 2	
DIN 51825 code	KPE2G-40	<b>Water resistance (max.)</b>	
NLGI consistency class	2	DIN 51 807/1, 3 hrs at 90 °C	1 max.
Thickener	Anhydrous calcium	Water wash-out test, ISO 11009	<5%
Colour	Yellow	<b>Copper corrosion (max.)</b>	
Base oil type	Ester	DIN 51811 / ASTM D4048, 24 hrs at 100 °C	2 max.
Operating temperature range	-40 to 100 °C (-40 to 212 °F)	<b>EP performance</b>	
Dropping point (min), ISO 2176	>140 °C (>284 °F)	4 ball - Wear scar (max.) DIN 51 350, 1 400 N, mm	2 max.
Base oil viscosity, DIN 51562		4 ball - Weld load (min.) DIN 51350/4, N	3 200 min.
40 °C, mm <sup>2</sup> /s	500	<b>Other data</b>	
100 °C, mm <sup>2</sup> /s	50	Flow pressure, DIN 51805-2	<1 400@ -40 °C
Penetration DIN ISO 2137		Density (DIN 51757) at 20 °C (68 °F)	0.95
Worked, 60 strokes, 10 <sup>-1</sup> mm	265 - 295	Shelf life	2 years
Prolonged (max.), 100 000 strokes, 10 <sup>-1</sup> mm	+35 max.	Certifications	ECOLABEL
Corrosion protection, Emcor			SE/027/008
ISO 11007, Distilled water	0 - 0	<i>These characteristics represent typical values.</i>	
ISO 11007 modified, Water washout	0 - 0		
ISO 11007 modified, 0.5% NaCl	<2 - 2		