

## ADVANTAGES

- the PrimeTracker immediately reacts already in case of the slightest off-centre running of the belt
- it guides the belt with very low friction and small forces and guarantees a long service life
- it does not “wait“ for the guide roller to tilt vertically (as with other systems), but reacts before
- it also functions perfectly in reversing mode
- easy installation
- maintenance-free
- special pivot bush, very durable
- it guarantees optimum position at the transfer points. In combination with the AirScrape spillage is no longer possible

### Thorsten Koth

Sales & Distribution

Phone +49 2842 9 32 92 94

Mobile +49 171 1 24 22 59

thkoth@scrapetec-trading.com

scrapetec-trading.com

### Wilfried Dünwald

Managing partner

Product development & Sales

Phone +49 2842 9 32 92 92

Mobile +49 172 1 57 30 89

w.duennwald@scrapetec-trading.com

scrapetec-trading.com



ScrapeTec Trading GmbH

Altfelder Straße 190

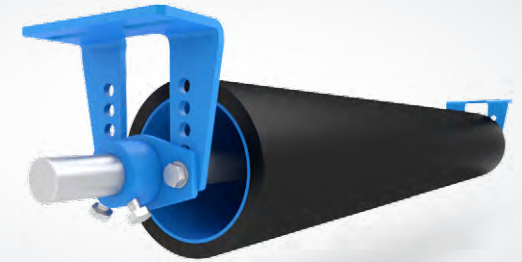
47475 Kamp-Lintfort, Germany

Phone +49 2842 9 32 92 93

info@scrapetec-trading.com

scrapetec-trading.com

# PRIMETRACKER



## CONVEYOR BELT TRACKING ASSISTANT

# PRIMETRACKER

## CONVEYOR BELT TRACKING ASSISTANT

## INSTALLATION POSITION

MAINTENANCE-FREE

WORKS PERFECTLY IN REVERSING MODE

REACTS IMMEDIATELY

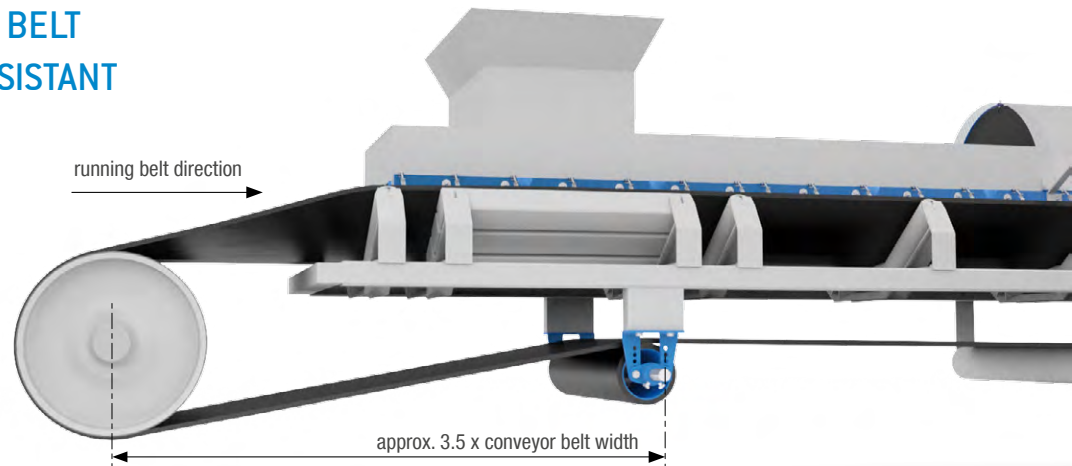
HIGH ENDURANCE

LOW FRICTION

SIMPLE INSTALLATION

DURABLE

THE CYLINDER BODY CAN TILT IN ALL DIRECTIONS



CAN BE INSTALLED ABOVE OR BELOW THE BELT

## MODE OF ACTION OF THE PRIMETRACKER FOR BELT MISALIGNMENT

